

Who are **Research Partners** and **Research Participants** and why do they matter to **Research**?

Research Partner

Individuals and Groups

Research Partners can be individuals or groups that include: patients, family, caregivers, or community members who collaborate with researchers in designing and conducting research studies.



Partners are: patients, community members and organizations

Contribute to Research

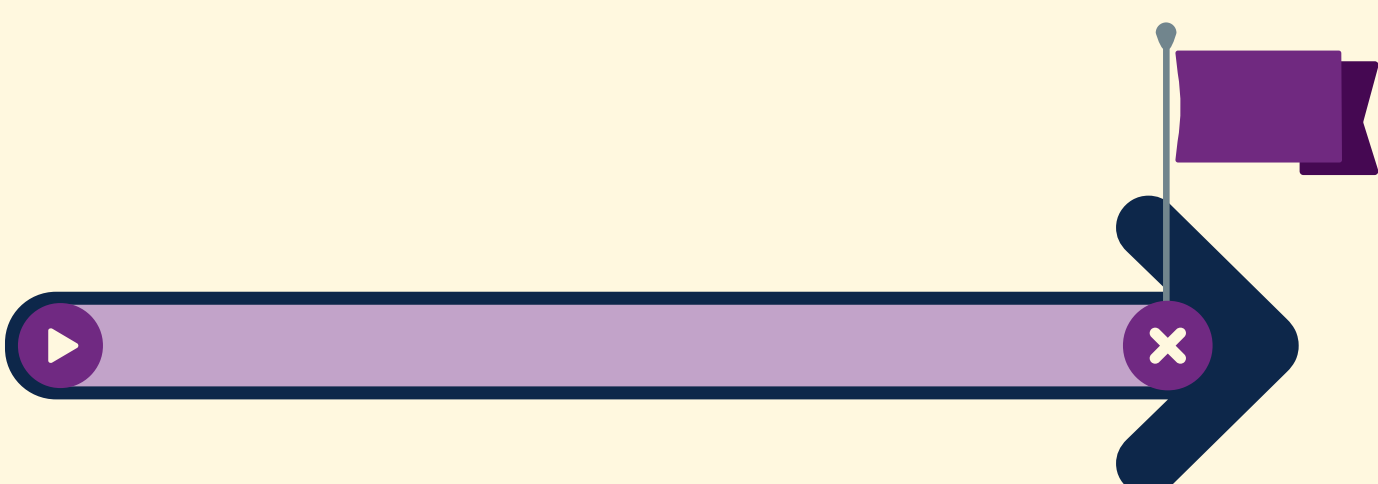
Research Partners help shape research questions, review recruitment flyers and other materials, and contribute to decision-making about a study.



Collaborate directly with researchers

Full Project Duration

Research Partners may be engaged throughout the entire research process, from planning to sharing the research results with others, which can last anywhere from several months to years.



Full project participation

Make It Useful and Meaningful

Research Partners help research stay important, respectful, and meaningful to patients and communities.



Research partner = (EQUALS) Balance

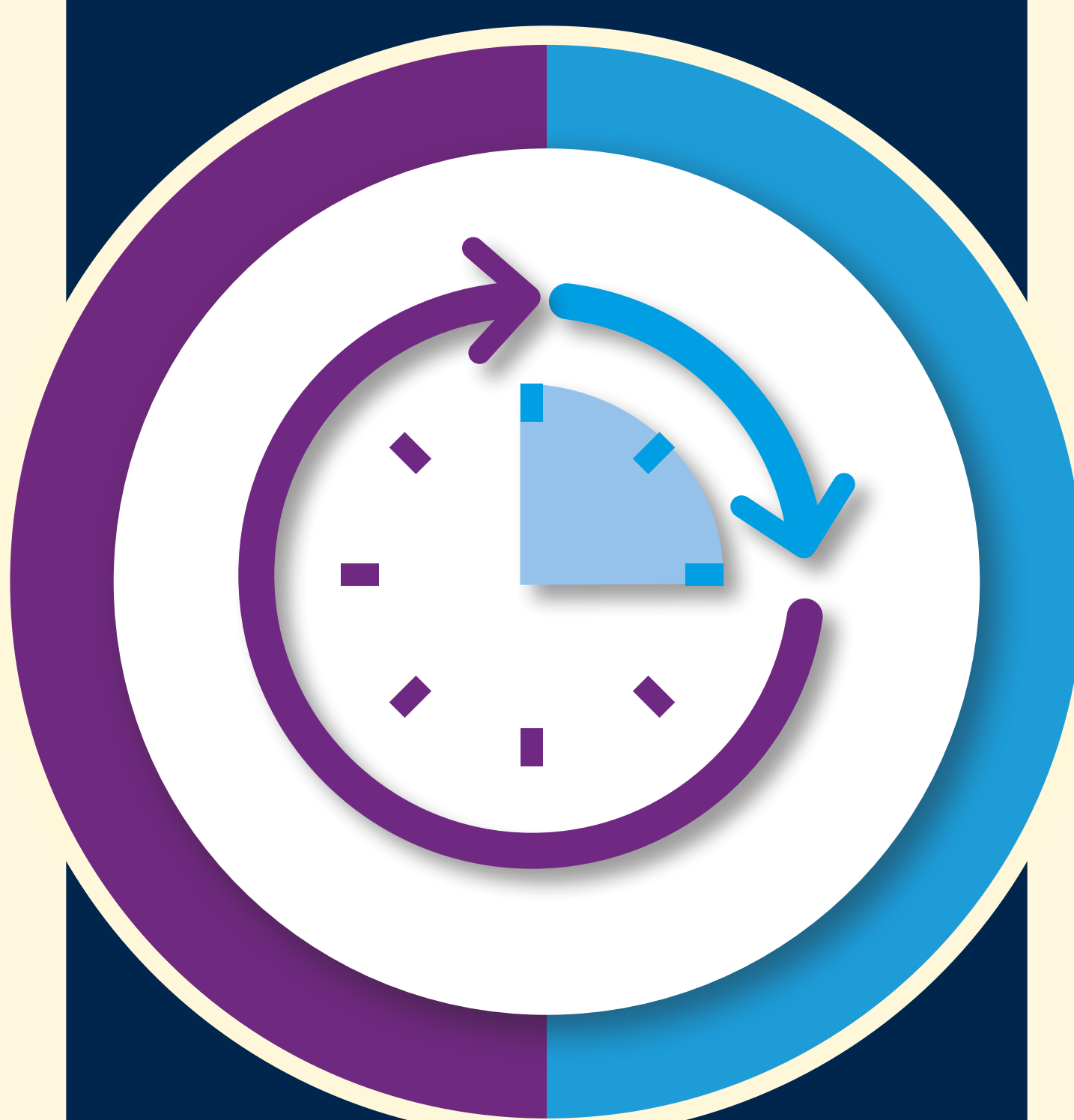
Who are they?



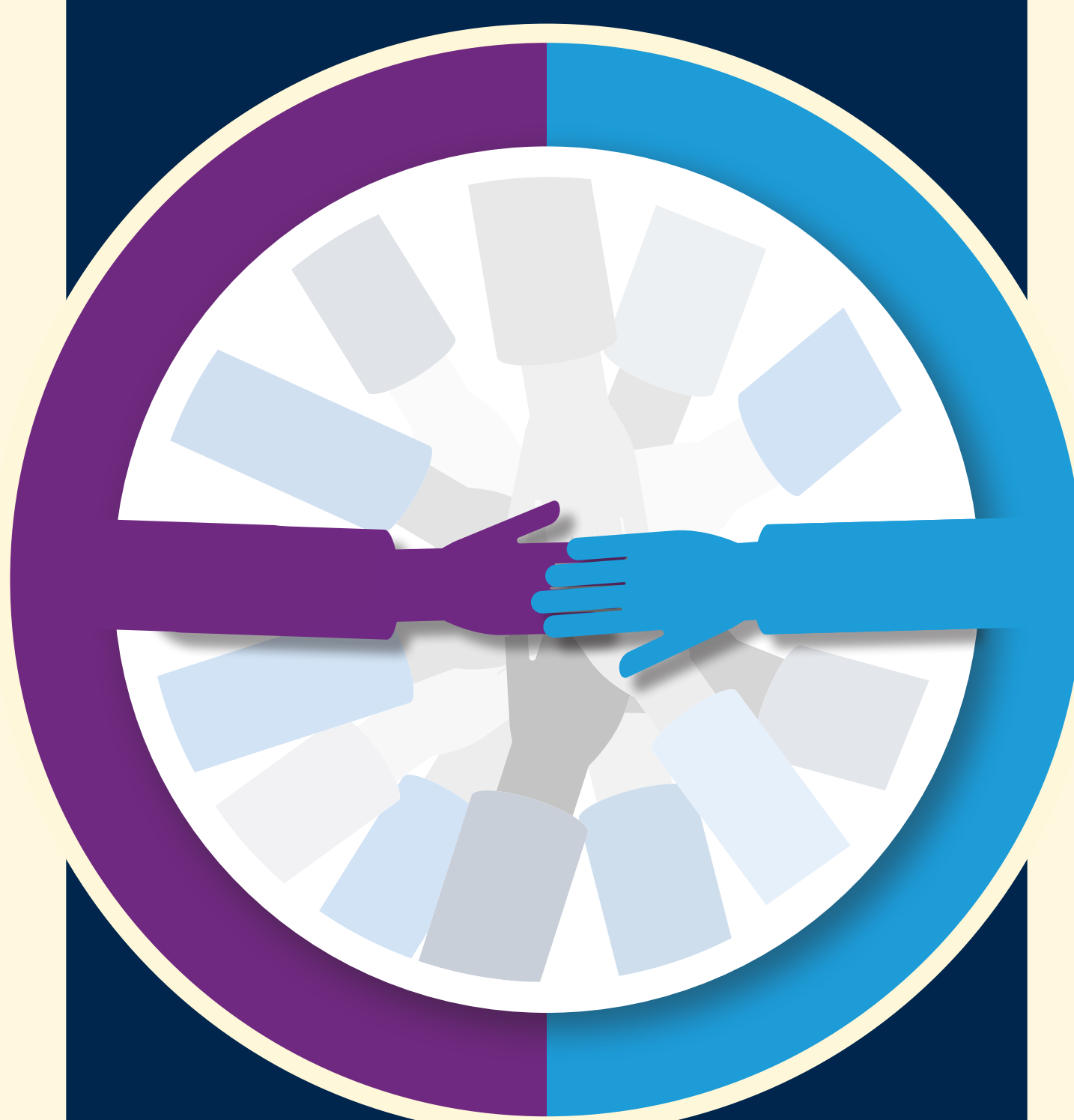
What they do?



Length of involvement?



How do they help research?



Research Participant

Individual

Research Participants are individuals who take part in a research study by providing data, answering questions, and participating in drug trials or treatments.



Participants are: individuals who provide personal data

Provide Data

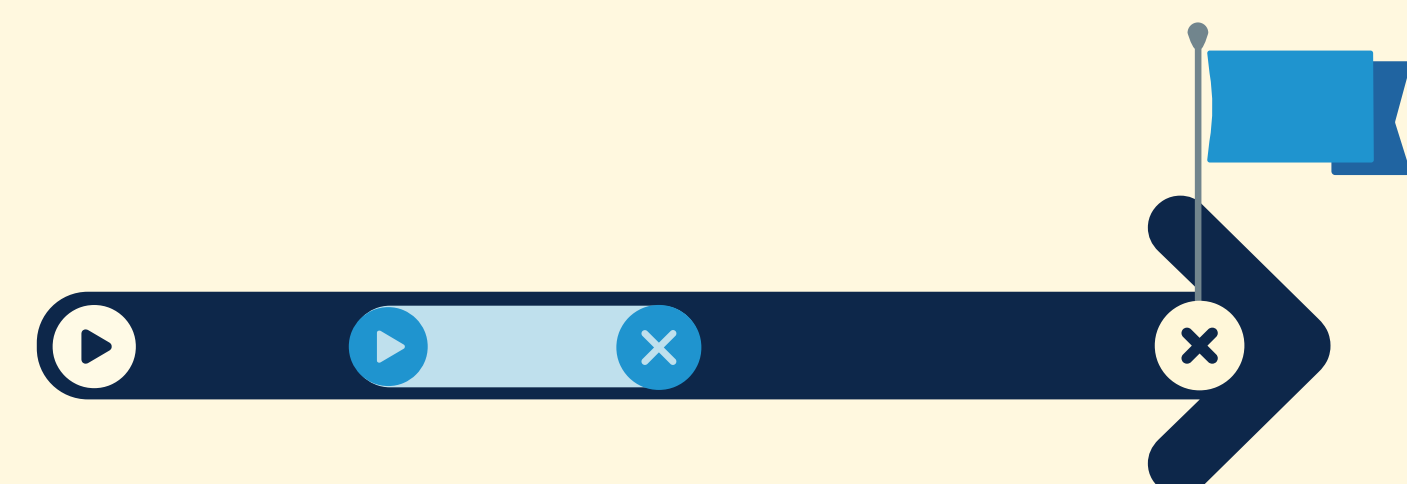
Research Participants help scientists by answering questions, trying out new treatments, or following study instructions. Their experiences help researchers learn new things.



Provide specific data and feedback

Limited Time-Frame

Research Participants' involvement is limited to the part of the study when data is collected, which can last anywhere from a single visit to several years, depending on the study.



Limited project participation

Provide First-hand Data

Research Participants provide important health information that helps answer research questions.



Research participant = (EQUALS) First-hand Data

Being a **Research Partner** or **Research Participant** are both ways to get involved in research. Participants may receive compensation, access to treatments, and health information, while partners may receive compensation, build skills, and help shape research decisions.

Each role helps improve healthcare for everyone.

To learn more or get involved scan the QR code:

